



Share



Tweet



Share



*Building the future of work together*

n. 5/2020

[SUBSCRIBE](#)

## Contributions



**Social dialogue is vital to tackle Covid-19 crisis**  
Michael Freytag



## Labour Markets & Reforms

**Encouraging European solidarity: an unconditional basic income**  
C. Neves, R. Merrill, Social Europe, May 2020

**Is history repeating itself? The impact of the Covid-19 crisis on youth**  
M. Mascherini, E. Sándor, Eurofound, May 2020

**Labour market consequences of a transition to a circular economy: A review paper**  
F. Laubinger et al., OECD Environment WP n. 162/2020

**Predicting the supply and demand shocks of the Covid-19 pandemic: An industry and occupation perspective**  
R.M. del Rio-Chanona et al., voxeu.org, May 2020



## Demography & Migratory Fluxes

**Cities are on the front lines of Covid-19**  
S. Wahba et al., blogs.worldbank.org, May 2020

**China's migrant workers need help in the economic downturn**  
T. Huang, piie.com, May 2020

## Focus

**Q1 2020 Results**  
Adecco



**Employer brand research  
2020 global report**  
Randstad



**Labour Market  
Advance Release  
First Quarter 2020**  
Manpower

M. Mayers, D. Damard, The Conversation, May 2020

**Migration and migrant population statistics**  
Eurostat, May 2020

**We can't recover from a coronavirus recession without helping young workers**

M. Ross, N. Bateman, Brookings, May 2020

**Immigrant key workers in Europe: The Covid-19 response that comes from abroad**

F. Fasani, vox.eu.org, May 2020



## Digital Work & On-demand Economy

**Working from home helps, but it's no panacea**  
J. Stanford, The Star, May 2020

**Working from Home: Estimating the worldwide potential**  
ILO PB, May 2020

**Work. Death of the office. As the pandemic leaves offices around the world empty, C. Nixey asks what was the point of them anyway?**  
C. Nixey, The Economist – 1843 Magazine, May 2020

**Who's Working From Home: The Education Divide**

A.P. Carnevale, Medium, April 2020



## Skills for the future

**Educational mismatches, routine biased technological change and unemployment: evidence from Italy**  
P. Esposito, S. Scicchitano, Inapp WP n. 48/2020

**Coronavirus special edition: Back to school**  
OECD, May 2020

**Distance and Online Learning during the time of Covid-19**  
ILO PB, May 2020

**What do Europeans do at work? A task-based analysis: European Jobs Monitor 2016**  
E. Fernández-Macías et al., Eurofound, May 2020



## Industrial Relations and Social Dialogue



**Workforce Report**  
**May 2020**  
**United States**  
LinkedIn



**Covid-19 and the world of work.**  
**Fourth edition**  
ILO



► **ILO Monitor:**  
**COVID-19 and the world of work, Fourth edition**  
Updated estimates and analysis

27 May 2020

### Key messages

#### Workplace and business closures

As indicated by recent figures providing additional details on the impact of workplace closure policies, 84 per cent of the world's workers are facing at least some form of workplace closure measures at present. Although some workers are able to continue their work from home, many others are unable to do so, leading to a significant loss of income and a further 1 per cent of the world's workers are facing workplace closures.

#### Lost working hours in the first half of 2020 continue to reflect a severe impact on employment

The prospects for the second quarter of 2020 remain dire, with the latest ILO estimates revealing a decline in working hours of around 182 per cent relative to the quarter of 2019, which is equivalent to the global labour force working a full-time equivalent of 1.8 billion hours less, and using the updated methodology, from a regional perspective, the Americas (12.1 per cent) and Europe and Central Asia (12.8 per cent) are the regions facing the largest losses in hours worked.

#### The labour market benefits of testing and tracing

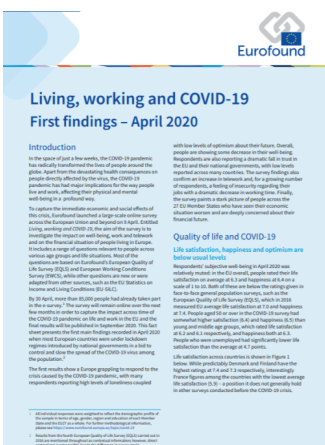
Testing and tracing of individuals, as recommended by WHO, is strongly associated with lower labour market disruption. ILO estimates suggest that testing and tracing can reduce the number of workers losing their jobs by up to 10 per cent, compared with 1 per cent for those with the highest immunity. This is an important factor to consider in the design of policy measures aimed at facilitating a safe return to work.

#### Widespread testing and tracing enables countries to better address information gaps and

enabling more effective public health policy and measures to protect the public and prevent the economic activity (economic confidence channel). Testing and tracing can also help to reduce disruption in operations at workplaces (workplace operations channel).

<sup>1</sup> All figures quoted in this edition of the ILO Monitor have been calculated on the basis of data available as at 17 May 2020, unless otherwise stated.  
<sup>2</sup> Figures quoted in this edition of the ILO Monitor have been calculated on the basis of data available as at 17 May 2020, unless otherwise stated.

**Living, working and Covid-19**  
Eurofound



**Living, working and COVID-19**  
**First findings – April 2020**

### Introduction

In the space of just a few weeks, the COVID-19 pandemic has radically transformed the lives of people around the globe. Apart from the disruptive health consequences on people's lives, the pandemic has had major implications for the way people live and work, affecting their physical and mental well-being in a profound way.

To capture the immediate economic and social effects of this crisis, Eurofound launched a large-scale online survey across the European Union in September 2019. The survey, which is ongoing, is designed to collect data on the impact of the pandemic on the lives of people across the EU. It includes a range of questions relevant to people across various age groups and living situations, both at the individual and household level.

By 20 April, more than 10,000 people had already taken part in the survey. The survey will continue over the next few months in order to capture the impact across time of the COVID-19 pandemic, as the world moves to the EU and the final results will be published in September 2020. This first report presents the first wave findings, covering April 2020 and the first 10 days of the pandemic, and provides a snapshot of the impact of the pandemic on the lives of people across the EU.

The first results show a European population that is largely positive about the response to the crisis caused by the COVID-19 pandemic, with many respondents reporting high levels of satisfaction with the response.

### Quality of life and COVID-19

Life satisfaction, happiness and optimism are key indicators of well-being. This report presents the findings of the survey on these indicators, showing that life satisfaction, happiness and optimism are generally high across the EU, despite the challenges posed by the pandemic.

Life satisfaction, happiness and optimism are generally high across the EU, despite the challenges posed by the pandemic. The survey shows that life satisfaction, happiness and optimism are generally high across the EU, despite the challenges posed by the pandemic. The survey shows that life satisfaction, happiness and optimism are generally high across the EU, despite the challenges posed by the pandemic.

The survey shows that life satisfaction, happiness and optimism are generally high across the EU, despite the challenges posed by the pandemic. The survey shows that life satisfaction, happiness and optimism are generally high across the EU, despite the challenges posed by the pandemic. The survey shows that life satisfaction, happiness and optimism are generally high across the EU, despite the challenges posed by the pandemic.

H. Nolan, *In These Times*, May 2020

## Organizing Matters. Two Logics of Trade Union Representation

G. Mundlak, *ILO*, May 2020

## Trade unions are key to a safe exit from the pandemic

L. Visentini, *Social Europe*, May 2020

## We should simplify our industrial relations system, but not in the way big business wants

D. Peetz, *The Conversation*, May 2020



## Social innovation

### Digital welfare states: boundaries and opportunities

S. Bekker, *Social Europe*, May 2020

### How we experience anxiety today

K. Grippenstraw, *Harvard Business Review*, May 2020

### Domestic workers chartbook

J. Wolfe et al., *Economic Policy Institute*, May 2020

### Finland's landmark trial finds basic income brings happiness but not jobs

K. Pohjanpalo, *BloombergQuint*, May 2020

### Which workers bear the burden of social distancing policies?

S. Mongey et al., *NBER WP n. 27085/2020*

### Restarting the Economy While Saving Lives Under Covid-19

C. Favero et al., *SSRN*, April 2020



## The new firm

### The Workplace-Surveillance Technology Boom

N. Chyi, *Slate Magazine*, May 2020

### Work. Covid-19. People analytics, explained

T. Harbert, *MIT Management Sloan School*, May 2020

### When machines think for us: consequences for work and place

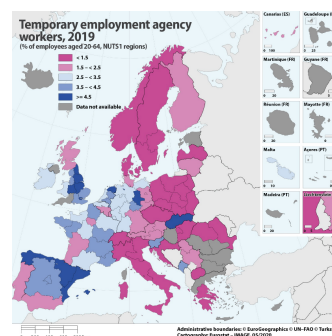
J. Clifton et al., *Social Europe*, May 2020

### Covid-19 and the new meaning of safety and health at work

*ILOSTAT Blog*, April 2020

## agency workers across EU regions

Eurostat



## Covid-19 Risks Outlook. A Preliminary Mapping and Its Implications

WEF



Insight Report

### COVID-19 Risks Outlook A Preliminary Mapping and Its Implications

In partnership with Marsh & McLennan and Zurich Insurance Group



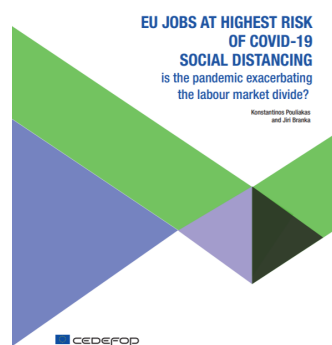
## Social Dialogue and the Future of Work

ILO



## EU jobs at highest risk of Covid-19 social distancing

Cedefop



This message has been sent to: <<Email>>

[Why have you received this email?](#) | [Unsubscribe](#) | [Update profile](#)

ISSN 2281-4469

ADAPT, viale Berengario, 51 Modena, MO 41121, Italia.

Executive Director: Michele Tiraboschi ([michele.adapt@gmail.com](mailto:michele.adapt@gmail.com))

Director of ADAPT University Press: Matteo Colombo ([matteo.colombo90@gmail.com](mailto:matteo.colombo90@gmail.com))